



X SERIES®

ZOLL®

Forward-Thinking Communication for the New Frontier of EMS

The days of the “work alone” monitor/defibrillator are rapidly a thing of the past. An EMS monitor must connect. And that interface is expected to be seamless.

Today, time-sensitive STEMI programs and ePCR systems drive communication needs. Mobile integrated health care, community paramedicine, and health information exchanges are on the horizon. Real-time streaming data and video are inevitable. The monitor you buy today *must* anticipate these needs.

Communications are not an afterthought for the X Series®. It is designed to embrace these needs. The X Series comes standard with a communication package rivaled only by those of the latest smart phones. It stands ready for these new challenges.

THE FULL COMPLEMENT OF INTEGRATED TECHNOLOGY

The X Series is the first monitor to integrate a complete array of communications technology. The approach not only delivers an added layer of protection for the demands of the pre-hospital environment, it eliminates the need for cables and dongles.

Every X Series comes with the following communications capabilities:

- WiFi
- Bluetooth
- USB 2.0
- Ethernet

WIFI – YOUR GATEWAY TO THE FUTURE

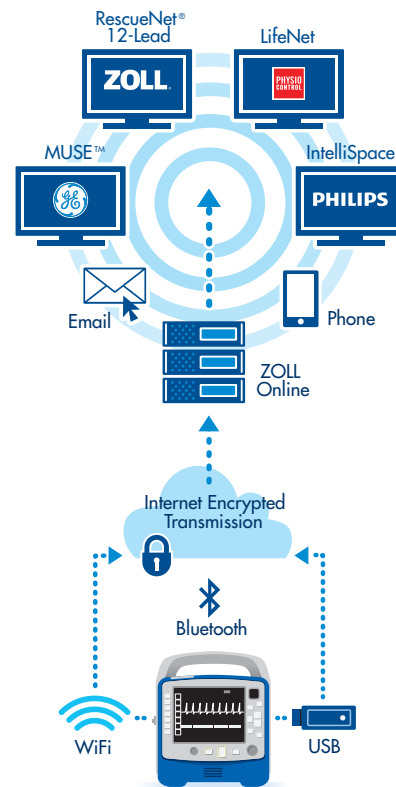
The X Series anticipates this future with its integrated WiFi transmitter. Compatible with the 802.11 a, b, g, and n standards, it delivers the speed required, and security expected, for sending large amounts of sensitive patient-care information.

OPEN ARCHITECTURE PUTS PATIENTS FIRST

The focus on “time to treatment” is all about process improvement. Sending a patient’s 12-lead is its foundation in many places. The open architecture philosophy embodied by the X Series design gives services, and ultimately patients, a path to improvements that can’t be matched by other monitors.

X Series 12-leads can be sent to all leading STEMI and cardiology management systems. A medic’s transport decision can now be driven by the shortest time instead of compatibility with a hospital’s system.

Open Architecture Maximizes STEMI Options



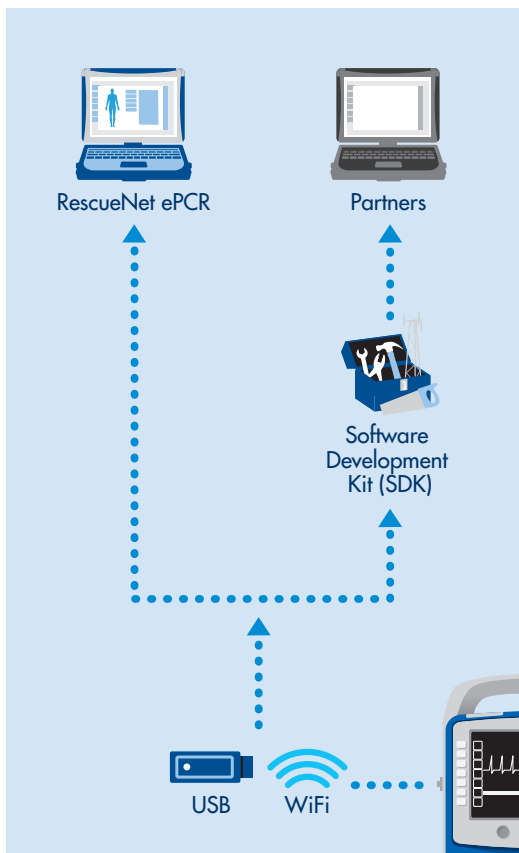
Designed for eCharting

The use of ePCR systems has dramatically increased the size of the files transmitted. And consider what's around the corner. The demands for real-time streaming waveforms and video will magnify the bandwidth requirements by more than ten-fold.

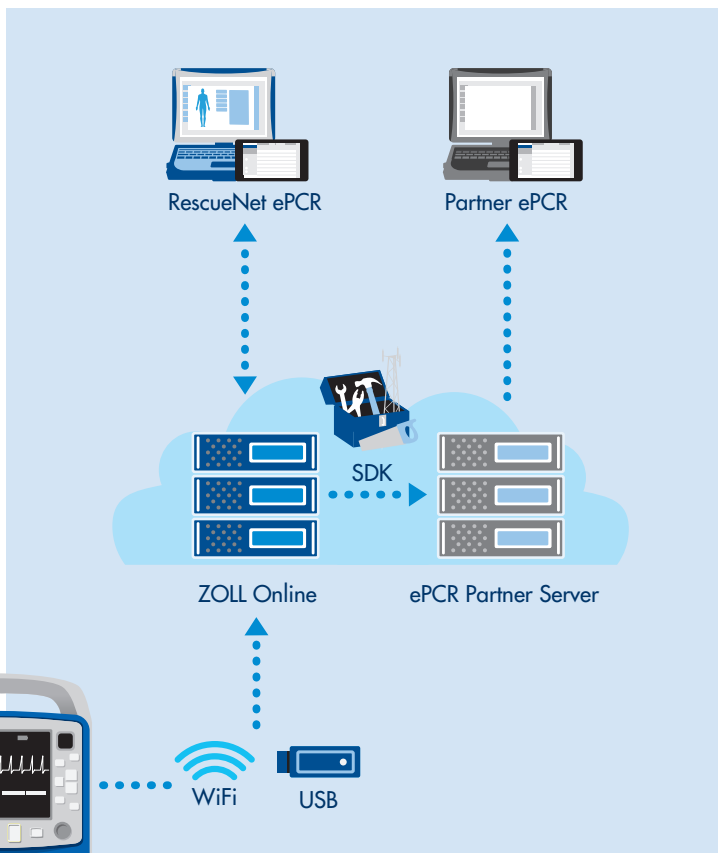
FAST,
SEAMLESS
DATA UPLOAD
SIMPLIFIES
CHARTING

The X Series redefines what a monitor should collect and send to the patient record. Its built-in memory ensures the complete patient record is transmitted by capturing 24 hours of event or trend data, and up to 1,000 time-stamped events. The X Series simplifies medic charting by seamlessly uploading the event record with the speed of a WiFi connection. It will automatically populate patient data fields for many of the leading ePCR systems.

Direct Transmission



Cloud-to-Cloud Transmission



ZOLL's open architecture makes it possible to send event files to all ePCR systems. In line with ZOLL's commitment to open architecture, a Software Development Kit (SDK) is available to any ePCR vendor desiring to complete the interface.